



 **NUR**
HEADPHONES

HARMONIA




“

NUR Harmonia The Essence of Music

Nur was born from the desire to experience music in its purest form—to feel every note, every breath, and every nuance.

In Arabic, **“Nur”** means **“Light”** and that is exactly our goal: to illuminate every sonic detail, bringing it to life in its most authentic form, resonating with pure emotion.

”



Nur Harmonia is a high-performance instrument, finely tuned even for audio professionals. Its frequency response is remarkably linear and extended, combined with a precise and detailed three-dimensional soundstage, making it a reliable reference for mixing and mastering.

A Reference for Those
Who Live in Sound



Nur is more than just technology—it is pure sensitivity. It is the perfect fusion of engineering and passion, science and art. Every detail is studied with obsessive care, using innovative materials and designing solutions that respect and enhance the sound. Because we know that listening is not just a technical experience—it is, above all, a human one.

I created **Nur Harmonia**
to experience
what lives within music.

Angel Alcala



“ In music, man perceives the heartbeat of the world’s will; the soul finds in sound its true nature, its essence of affinity.

(Rudolf Steiner) ”



Anti-reflection profiles

Aluminum structure

N52 neodymium magnets

Optimized stiffening grid for reflections

Felt filters to compensate frequency response

Carbonylon frame

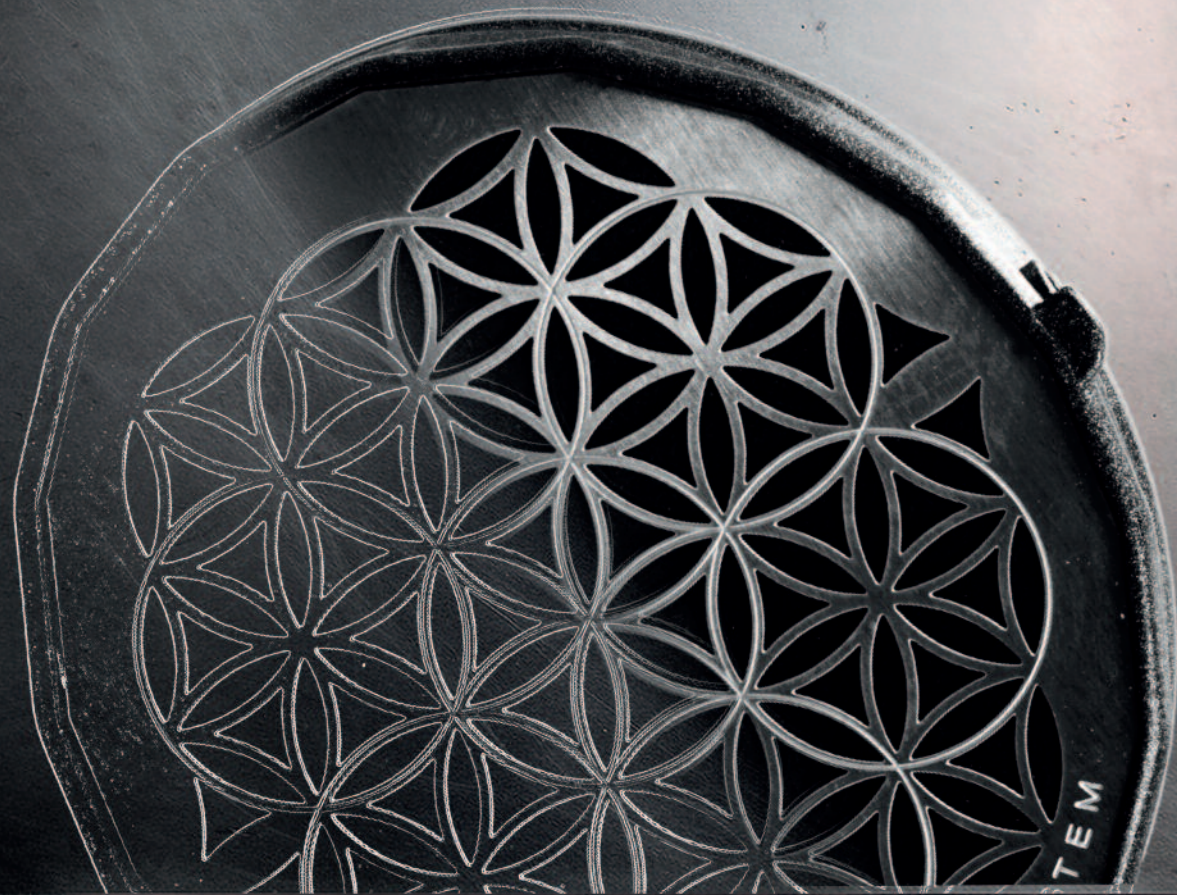
Antiresonance treatment with Dynamat[®]

PEEK Uniforce double layer planar membrane

Feeling Sound System

Sound expansion chamber

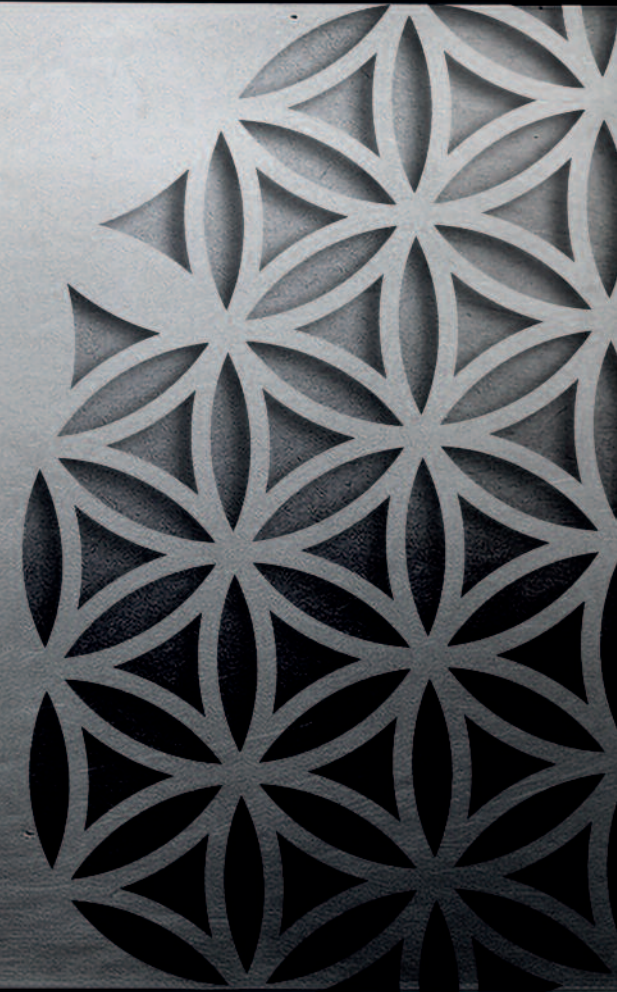
Angled genuine leather ear pads



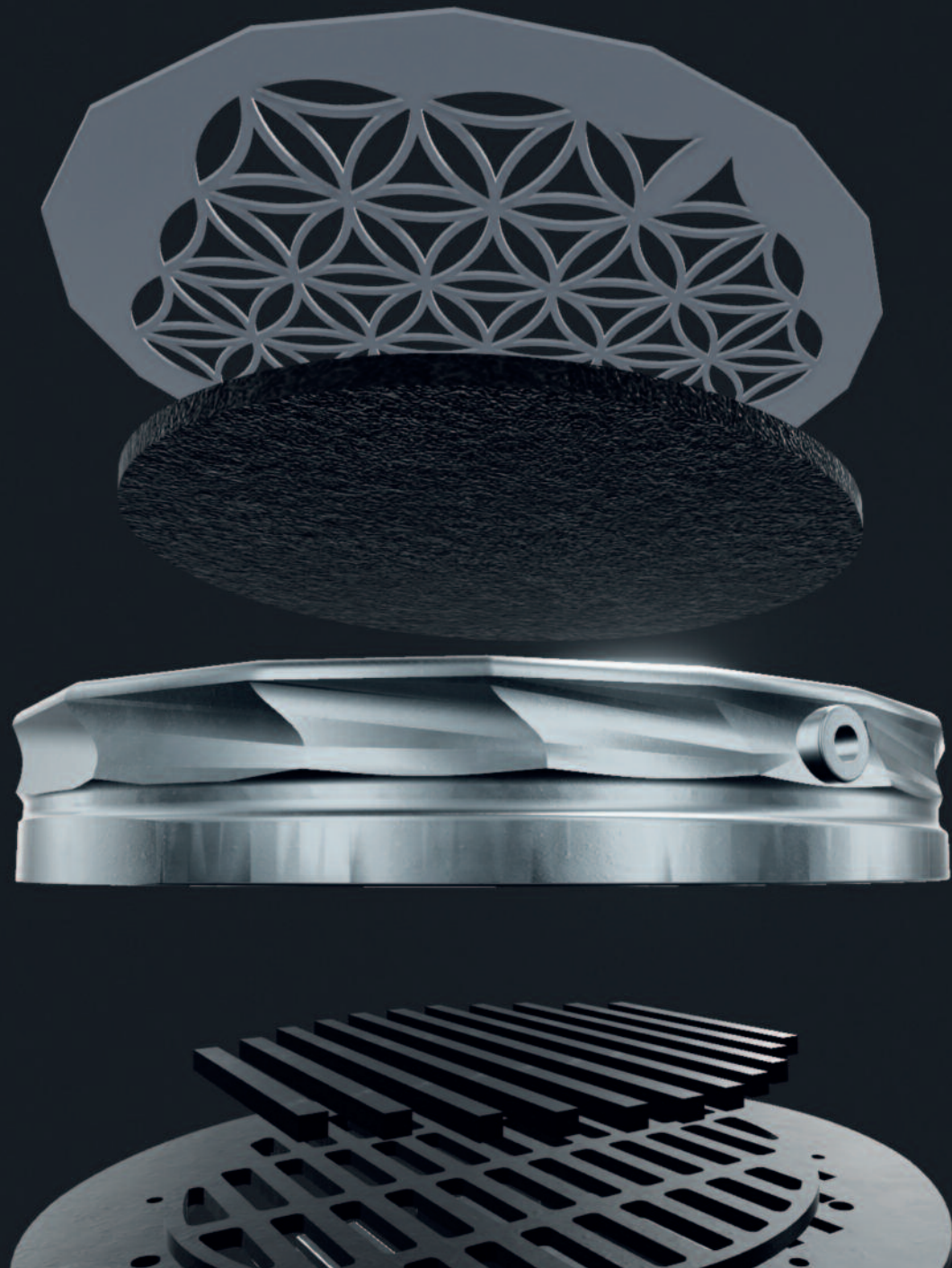
Grille

Crafted from **raw 301 stainless steel**, the Nur Harmonia acoustic grid is inspired by the **Flower of Life** symbol, minimizing unwanted reflections while reinforcing the frame.

This design ensures a uniform sound response and extraordinary consistency across the entire frequency spectrum.



H A R N I O T A



Felt Filters

“ A carefully calibrated felt layer, optimized in density and thickness, regulates airflow within the drivers, refining mid and high-frequency reproduction. The result? A natural, balanced, and incredibly immersive sound. ”

Frame

“

The frame is a sophisticated combination of innovative materials. The outer shell, manufactured using advanced additive technology, incorporates carbon-reinforced nylon powder (30% carbon), reducing overall weight and enhancing comfort. Structural rigidity is ensured by the synergy between the steel acoustic grid and the robust, CNC-machined aluminum driver housing.

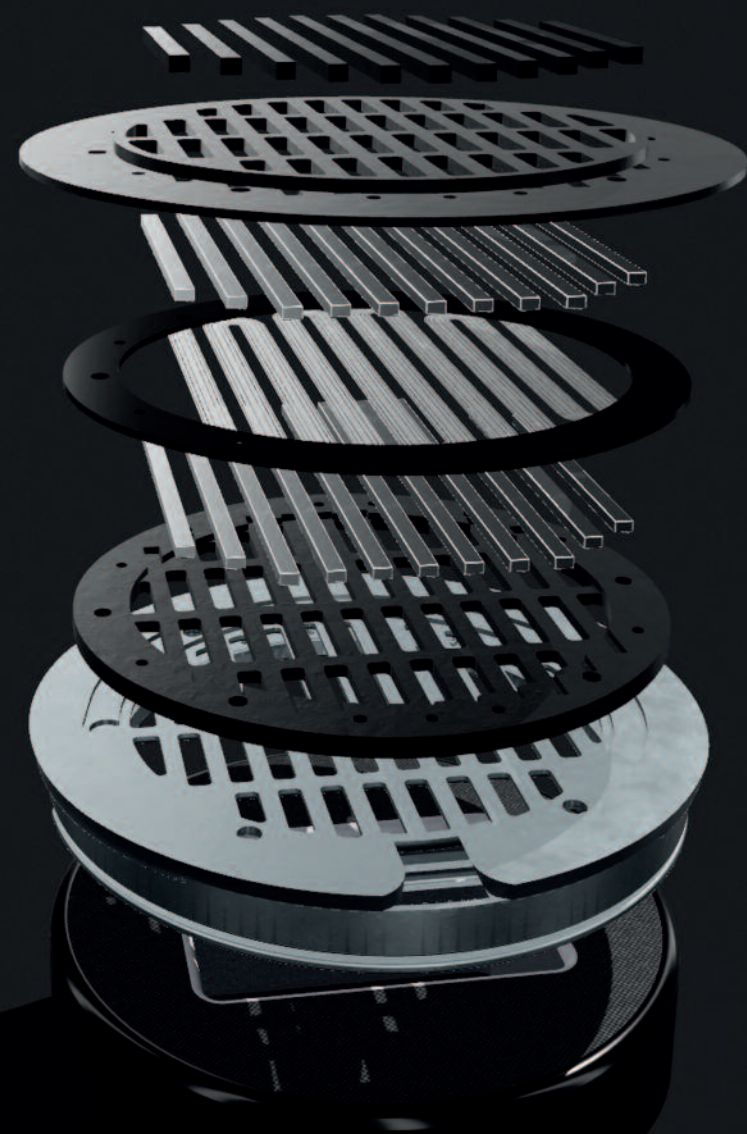
The **Carbonylon** structure allows for complex internal geometries that effectively manage sound reflections, delivering a precise and emotionally engaging listening experience.

”



Nur Harmonia has been developed in partnership with the laboratories of DIET (Department of Information Engineering, Electronics, and Telecommunications) and CERSITES (Center for Research and Services for Sustainable Technological Innovation) at Sapienza University of Rome.





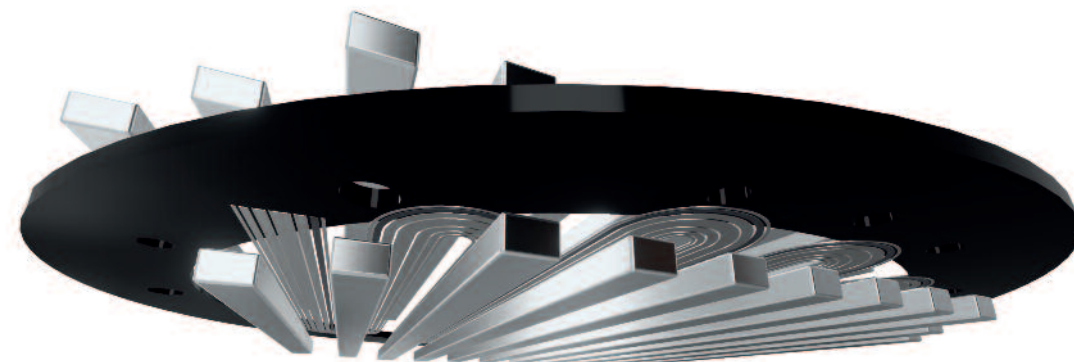
Planar Driver

“

The isodynamic drivers of **Harmonia** redefine fidelity standards with an extended frequency response from 8 Hz to 50 kHz.

The ultra-thin **3-micron PEEK** planar membrane, printed on both sides using **Uniforce technology**, ensures a perfectly uniform electromagnetic force distribution, reducing distortion and improving transient response.

”

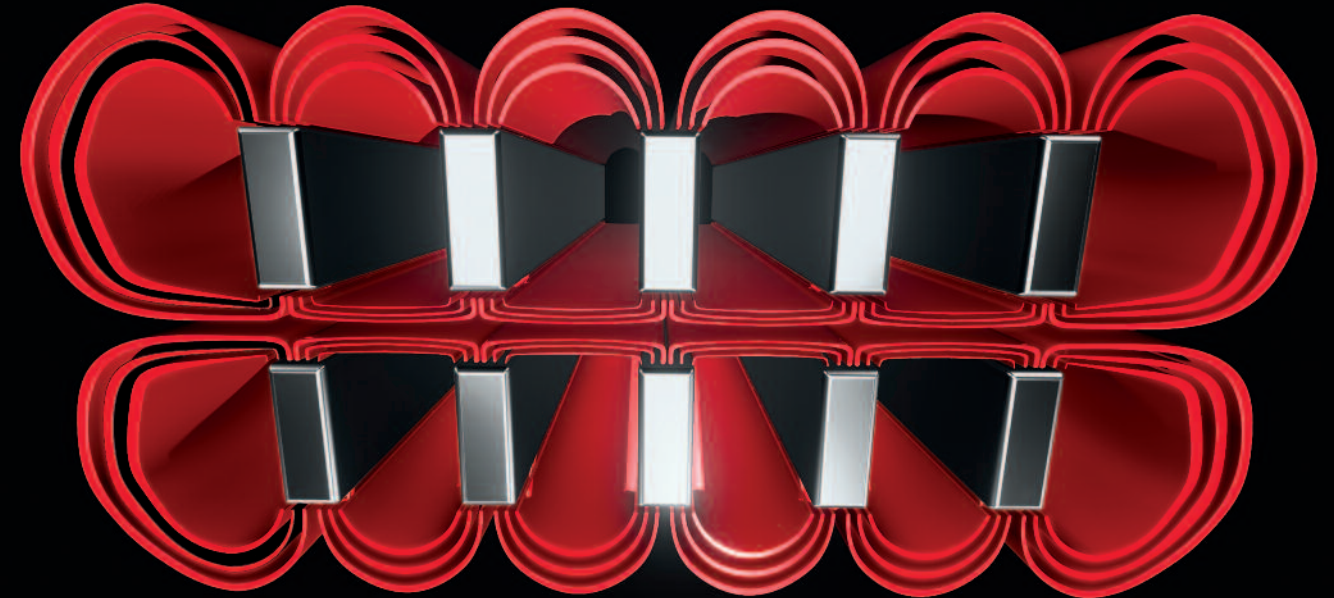


Optimized Magnetic Flux



Featuring a **Neodymium N52 magnetic array**, one of the most powerful magnet configurations available, the system generates a strong and stable magnetic field, maximizing transduction efficiency.

With an impedance of **48 Ohms** and a **sensitivity of 107 dB** (+/-1.5 dB) @1 kHz, **Nur Harmonia** delivers exceptional dynamics, detail, and compatibility with various amplification technologies, from tube amps to solid-state designs.





Sound Expansion Chamber

“

Engineered to create a uniquely immersive acoustic experience, the **sound expansion chamber** generates a wide, three-dimensional soundstage.

The internal acoustic treatment enhances spatial perception, allowing listeners to pinpoint the exact position of instruments in the virtual stage.

”



AUR



“ Music is the language of the spirit.
Its secret current vibrates between
the heart of the singer and the soul
of the listener.

(Khalil Gibran)

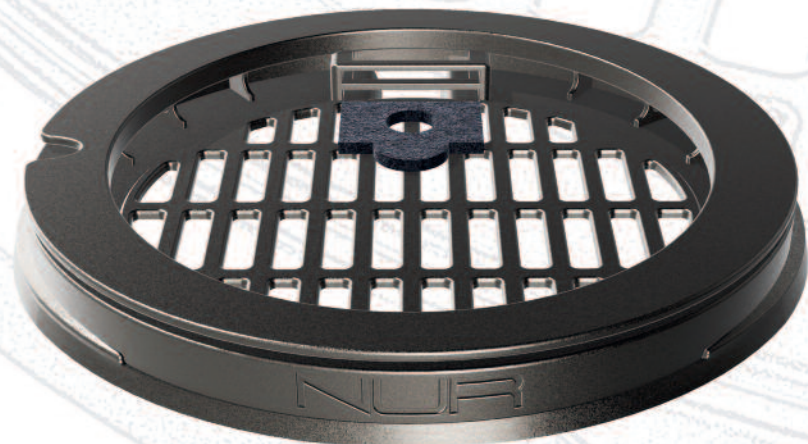
”

Feeling Sound System



The **Feeling Sound System** allows listeners to fine-tune their sound signature by inserting specialized panel filters that regulate internal chamber pressure.

This system gives you the freedom to shape your ideal listening experience while preserving the purity of the music.



Nur Harmonia has been developed in partnership with the laboratories of DIET (Department of Information Engineering, Electronics, and Telecommunications) and CERSITES (Center for Research and Services for Sustainable Technological Innovation) at Sapienza University of Rome.

Feeling Sound System

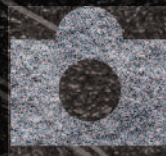
The Feeling Sound System features a dedicated slot for two filters inside the sound expansion chamber, allowing airflow adjustment by inserting specially designed felt filters.

These filters are stored in a dedicated container included in the package. Each filter has been carefully designed for a specific function:

No Filter

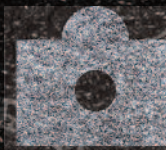
When no filter is applied, the driver moves freely, maximizing transient response.

However, the frequency response becomes less linear, requiring an amplifier with strong membrane control through current-driven operation.



Full Bass Filter

This filter, featuring the largest opening, extends the frequency response while preserving the characteristics of the no-filter configuration.



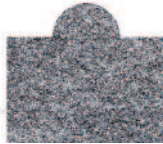
Mid Bass Filter

By progressively restricting airflow, this filter linearizes the response and enhances amplifier control over the membrane, indirectly increasing the damping factor.



Precision Filter

Optimized for a highly linear frequency response, this filter is particularly suited for professional studio monitoring applications.



Tube amp mode

With no openings in the felt, this filter maximizes damping, making it easier for tube amplifiers or voltage-driven systems to control membrane movement. The transient response is slightly softened, resulting in a particularly smooth and linear frequency curve.

Multi-Filter Configurations

It is possible to combine multiple filters to achieve different sonic results, following this fundamental principle:

Greater airflow freedom

The membrane moves more freely, maximizing transient response but reducing low-frequency extension.

More restricted airflow

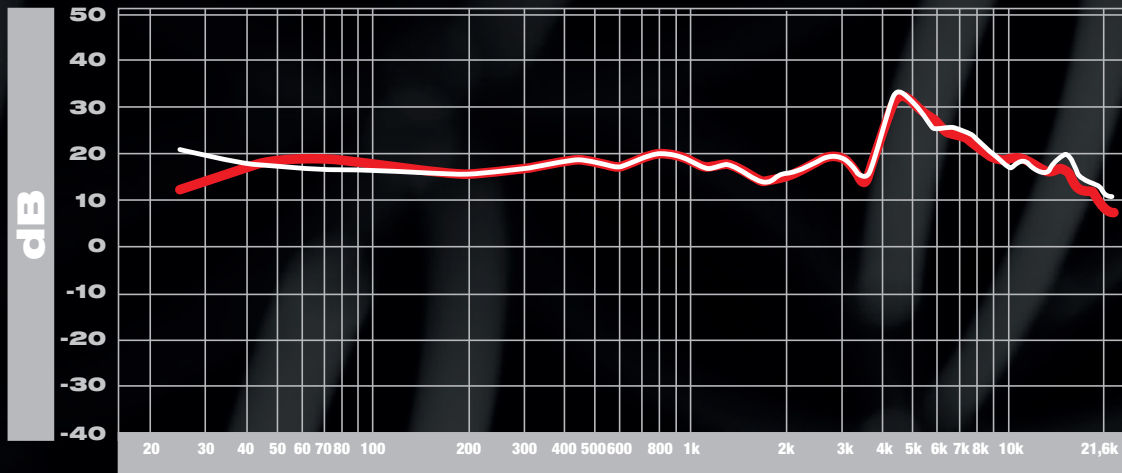
increased damping, resulting in deeper bass extension and enhanced control over the membrane's movement.



HARMONIA



PRECISION FREQUENCY RESPONSE



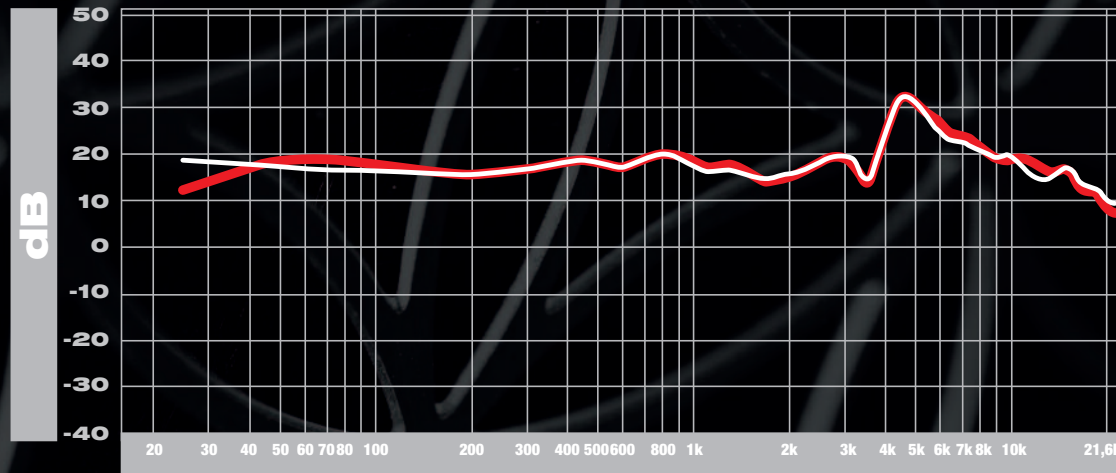
■ NO FILTER



HARMONIA



MID BASS FREQUENCY RESPONSE



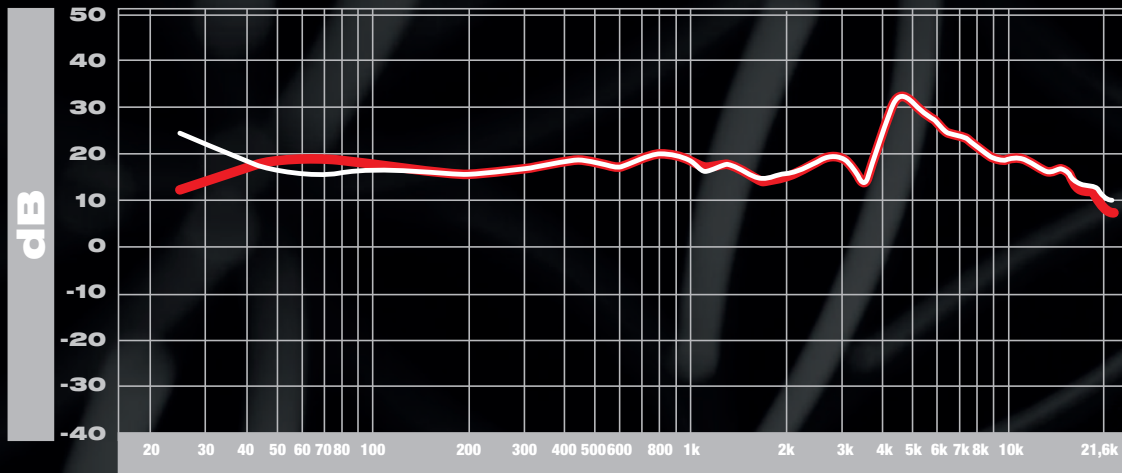
■ NO FILTER



HARMONIA



FULL BASS FREQUENCY RESPONSE



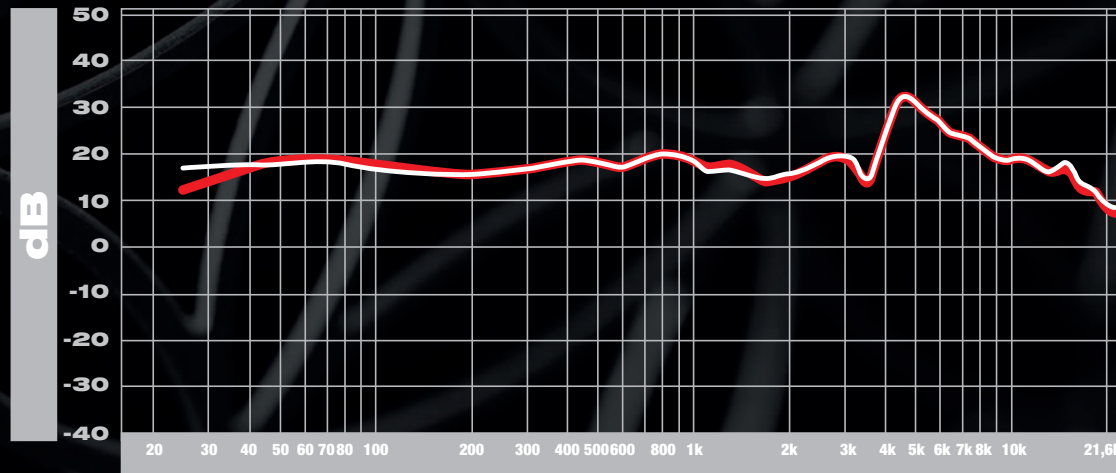
■ NO FILTER



HARMONIA



TUBE AMP MODE FREQUENCY RESPONSE



■ NO FILTER



*Le misure sono in Raw

In collaborazione con i laboratori del DIET (Dipartimento di Ingegneria dell'Informazione, Elettronica e delle Telecomunicazioni) e del CERSITES (Centro di Ricerca e Servizi per l'Innovazione Tecnologica Sostenibile) della "Sapienza Università di Roma".



Earpads

Harmonia supports a variety of earpads to fine-tune the sound. However, the default pads have been meticulously selected after extensive testing to provide an optimal balance—a precise, analytical experience for professionals and a deeply engaging one for music lovers.

Their angled design projects the soundstage forward, while the soft padding and premium sheepskin leather ensure long-lasting comfort.



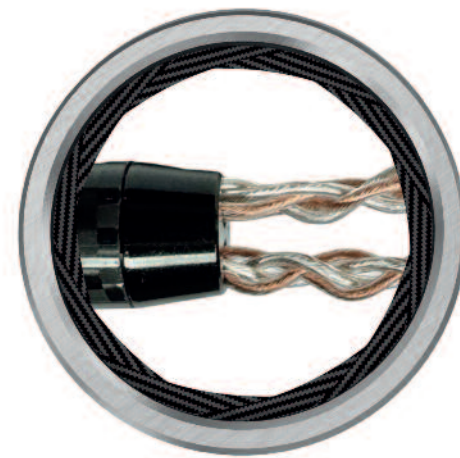
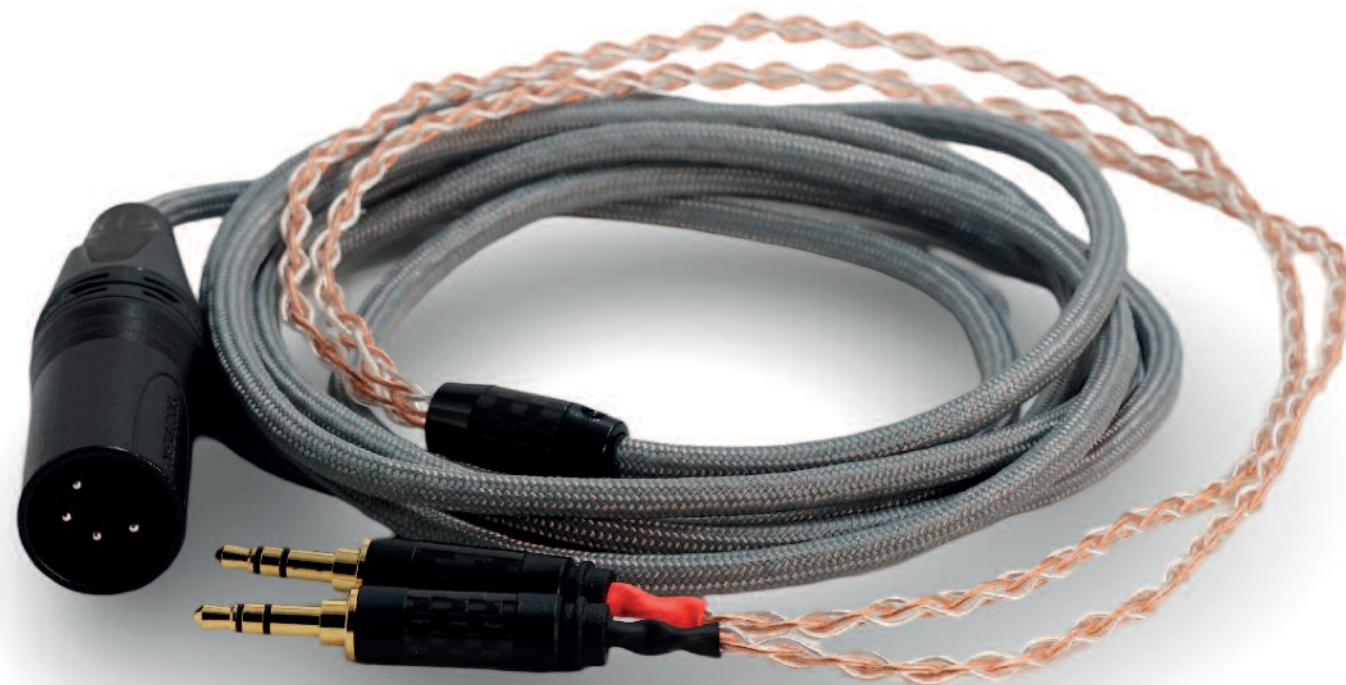


Cables

“

Nur, in collaboration with **1221 Hi-Fi Lab**, has created a 6N OFC 8-core cable, featuring 4 copper conductors and 4 silver-plated copper conductors with a 1-micron thickness. This mixed configuration delivers excellent performance in terms of control and soundstage openness.

”



Technical specifications

| | |
|---------------------------|---|
| Style | Over-ear, open-back |
| Chassis | Additive manufacturing Carbonylon & steel 301 |
| Driver | Planar magnetic 105mm with aluminium structure |
| Frequency response | 8 Hz to 50 KHz |
| Sensitivity | 107 dB (+/- 1,5 dB) @1kHz |
| Rated Power | 3.000 mw |
| THD | <0,1% @ 100dB SPL 1kHz |
| Impedance | 48 Ohm |
| Magnetic system | Toroidal, double side, high-grade N52 NdFeB |
| Weight | 630 gr |
| Pad System | Feeling Sound System + Expansion Chamber |
| Planar membrane | Made of 3-micron PEEK, printed on both sides with Uniforce technology |





NUR Harmonia
Created by enthusiasts,
for enthusiasts.



www.nurheadphones.com